

New LOCATIONS

Rhode Island
 233 Harris Avenue
 Providence, RI 02903
 401-331-5930
 800-556-7544

Maine
 105 St. James Street
 Portland, Maine 04102
 207-774-4444
 800-492-0884

Please welcome to
 our Tribble's Family



TWIN CITY SUPPLY
 PROVIDENCE, RI • PORTLAND, ME
 (800) 556-7544 • (800) 492-0884
Since 1955, a leading supplier of appliance parts and accessories.



Look Inside

for all your parts and
 appliance needs

Tempstar	Page 2
NEW PRODUCTS	Page 3
Goodman	Page 4
Aerosys	Page 5
Amana & Convector	Page 6
Gibson & Haier	Page 7
Motors	Page 8
HVAC Supplies	Page 9
Tools	Page 10
GE Appliances	Page 11
Whirlpool Appliances	Page 12
Frigidaire Appliances	Page 13
Brown Stove Appliances	Page 14
Water Heaters	Page 15
Broan & Misc.	Page 16
Faucets/Shower	Page 17
Toilets & Accessories	Page 18
Plumbing	Page 19
Locations	Page 20

APPLIANCE PARTS • HEATING • AIR CONDITIONING
 "Sales through Service"

Time to get READY for WINTER!!!!!!



Sale prices in this brochure are valid until February 29, 2016. Prices subject to change without notice.

**FEATURING:
 GE APPLIANCES
 (see page 11)**

**Tribles 3rd Annual Marine Corps
 TOYS FOR TOTS Campaign**
 Donation boxes are at each location.
 You may also donate by giving a new unwrapped toy to any
 of our drivers or Sales People. **Thank you for your support.**



**COMING SOON:
 SHARKBITE PRODUCTS**





TEMPSTAR

- 14 Seer Heat Pump Units and Air Handlers
- 14 Seer Condensing Units/Coil and Furnaces
- 1.5 Ton up to 5 Ton

GAS FURNACES

80% Efficiency

8MSN0451408A-80% Gas 45K BTU

8MSN0701412A-80% Gas 70K BTU

8MSN0901714B-80% Gas 90K BTU

92% Efficiency

9MSB0401410B-92% Gas 40K BTU

9MSB0601412C-92% Gas 60K BTU

9MSB0801716B-92% Gas 80K BTU

9MSB1002116C-92% Gas 100K BTU

ZEROL ICE ADDITIVE

ICP040232191046



Please call your sales representative or branch for more information on Tempstar equipment



Shoe Covers
 Bigger and Better Design Made Specifically for Service Industry Professionals

- Prevents Tracking Dirt and Dry Debris in Client's Homes
- Stronger than Other Shoe Covers on the Market
- Fits Up to a Size 18 Work Boot
- Breathable, Cloth-like Material
- Dispenser Boxes hold 50 pair/100 Individual Shoe Covers

QB SHUBEE.....\$26.48



FURNACE MOUNTING BLOCK
 Each furnace mounting block can support 40% more weight than competitive products – over 500 pounds! Easy peel and stick installation.

DIVFB-1.....\$3.21 EACH



Emerson SureSwitch™ Relay
 Universal Electronic Upgrade for Mechanical

- 5x contactor life
- Sealed to keep out ants and debris
- Microprocessor-controlled sealed compressor switching
- Protects compressor from brownouts and short cycling
- Ideal for Preventive Maintenance contracts
- 5 Year Warranty

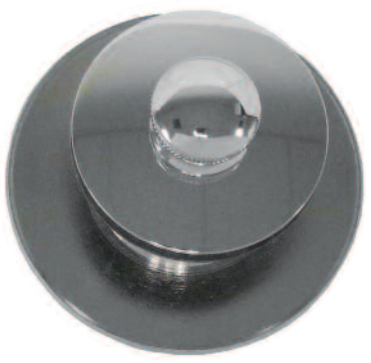
Compressor Contactors
WR 49P11-843.....\$39.95



ProClean Dryer Lint Removal Kit
 This product will help keep the dryer running both safely and efficiently. The 10' dryer duct brush removes lint and debris that gets built up on the inside of the duct while the 36" lint trap vent brush as well as the vacuum hose attachment help to deep clean the lint trap of the dryer.

DUNBPCK.....\$17.64

Nu-Fit Push Pull Tub Covers
EZF35425
\$29.50 each
\$26.73 6 Lot
\$25.81 12 Lot



Sensible Products Combo Flashlight
SP DWL-1.....\$24.75

Don't forget the SNOW SHOVELS!!!

- Big Foot Snowdozer **SSV1197\$16.05**
- Big Foot Poly SUPER Shovel **SSV1199\$11.20**

Goodman[®]

Air Conditioning & Heating



1.5 to 5 Ton Units Available



LIMITED SUPPLY: 13 SEER UNITS



Please contact your Sales Representative or Local Branch for more information **1-800-TRIBLES** (874-2537)



AeroCool DCW Series

The DCW Series of chilled water air handlers are designed to operate with centrally supplied chilled water source. Units are rated for use with 42°F, 45°F and 48°F entering water temperatures in the cooling mode.

These systems can also be used as a heating system when supplied with hot water instead of the chilled water. Units are rated for use with inlet hot water temperatures from 120°F to 180°F. These units are not recommended for leaving air temperatures over 140°F.



CALL FOR PRICING
1-800-TRIBLES (874-2537)

THHP Split Air Cooled Heat Pumps

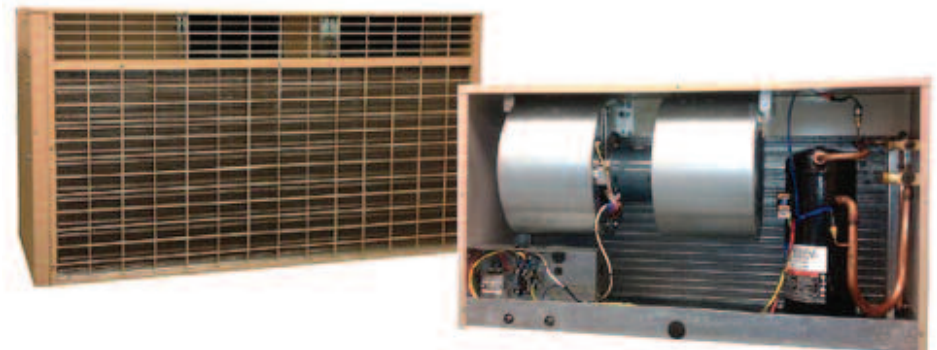
AeroCon split heat pump systems incorporate high efficiency, scroll compressors and extended surface coils to increase the unit's operating efficiency and reliability. Systems are available from 1 to 2-1/2 tons of capacity and 2 cabinet sizes for customer flexibility.



Aeropak™ Series

The Aeropak™ series units are a compact Thru-The-Wall heating and cooling unit. The Aeropak allows each tenant or condo owner to have complete control of their comfort needs. The Aeropak can be specified in **3 combinations:**

- APG-Series Gas Heating / Electric Cooling
- APE-Series Electric Heating / Electric Cooling
- APH-Series Heat Pump



THDC-36/48/60 Series

Centrifugal Condensing Systems THDC36, 48 and 60() centrifugal condensing systems are used in critical cooling applications needing horizontal condenser air discharge and inlet on the same face.

FXC Classic Cabinet Series

The IEC FXC Classic Cabinet Series features a slender design, making it ideal for perimeter heating and cooling applications in public buildings, offices, hospitals, and hotels. The FXC cabinet is fabricated of heavy gauge steel. All FXC units have a removable one-piece front panel for easy access to all internal components. Standard FXC units are provided with an attractive powder-coat paint finish.

Features

- 200 to 1200 CFM
- An Eco-telligent ECM motor option with an efficiency range of 65 – 85% compared to the efficiency range of 30 – 40% on a standard PSC motor
- High performance hydronic coils that average 26% percent greater capacity than the previous Vertical series coils
- Filter replacements require no tools, so changing them out is literally a snap
- Highly customizable cabinetry allows for flexible footprints making the “Classic” series a great fit for new construction or renovation
- 3 Speed Wall Switch with OFF position

Benefits

- Application fit — available in eight nominal sizes for applications in a variety of room layouts
- Design flexibility — standard and high-capacity hydronic coils are available to match the space heating and cooling loads
- Ease of installation — factory assembly minimizes piping and electrical work required at job site
- Quality and safety — every unit is tested, inspected, and AHRI certified
- Ease of service — all components are accessible by removing the front panel, making them one of the most maintenance friendly units available



3 Speed Wall Switch with OFF position
FCOE332.....\$25.42 each



CALL FOR PRICING
1-800-TRIBLES (874-2537)



PTAC w/Heat and Cool

All Amana PTAC units fit into a wall sleeve
42"Wx16 1/6"Hx13 3/4"D

Model Number	Description
PTH073G35AAXX	Heat Pump 7K BTU 230V 3.5KW R410A
PTH093G35AAXX	Heat Pump 9K BTU 230V 3.5KW R410A
PTH123G35AAXX	Heat Pump 12K BTU 230V 3.5KW R410A
PTH123G50AAXX	Heat Pump 12K BTU 230V 5.0KW R410A
PTH153G35AAXX	Heat Pump 15K BTU 230V 3.5KW R410A
PTH153G50AAXX	Heat Pump 15K BTU 230V 5.0KW R410A

Amana[®]
HIGH PERFORMANCE HAS A NAME[™]

Wall Thermostat

Non-programmable w/2 stage Heat/2 stage Cool/Heat Pump Thermostat for use with the Amana PTAC Units

JAN2246007.....\$79.27
Special Order Only





CALL FOR PRICING
1-800-TRIBLES (874-2537)

Haier



13 SEER UNITS IN STOCK WHILE SUPPLIES LAST

1.5/2.0 Air Handler, Model HB2400VD2M20	\$286.00
13S/2T AC-Model HC24D2VAE R410	\$491.70
13S/3T AC-Model HC36D2VAE.....	\$609.40
13S/3.5T AC-Model HC42D2VAE	\$664.40
13S/4T AC-Model HC48D1VAE.....	\$740.30
13S/5T AC-Model HC60D1VAE.....	\$849.20
13S/1.5T Heat Pump-Model HR18D2VAE	\$585.20
13S/2T Heat Pump-Model HR24D2VAE.....	\$614.90



80% 70K Gas Furnace-Model HG80B07012A	\$387.20
80% 90K Gas Furnace-Model HG80B08512A	\$411.40
80% 90K Gas Furnace-Model HG80B08516A	\$424.60
80% 100K Gas Furnace-Model HG80B10012A	\$429.00
80% 100K Gas Furnace-Model HG80B10016A	\$431.20
80% 115K Gas Furnace-Model HG80B11520A	\$451.00
80% 135K Gas Furnace-Model HG80B13520A	\$518.10

HAIER-13 SEER UNITS-Special Pricing (While supplies last)

1.5T A/C R410A-HAIHC18D2VAE	\$459.00
2.0T A/C R410A-HAIHC24D2VAE	\$489.00
2.5T A/C R410A-HAIHC30D2VAE	\$539.00
3.0T A/C R410A-HAIHC36D2VAE	\$609.00
3.5T A/C R410A-HAIHC42D2VAE	\$659.00
4.0T A/C R410A-HAIHC48D1VAE	\$739.00
5.0T A/C R410A-HAIHC60D1VAE	\$849.00
1.5T HP R410A-HAIHR18D2VAE	\$549.00
2.0T HP R410A-HAIHR24D2VAE	\$609.00
4.0T HP R410A-HAIHR48D1VAE	\$959.00
5.0T HP R410A-HAIHR60D1VAE	\$1189.00

GIBSON OIL FURNACES

80% Low Boy Classic Furnace GIB04LD140A16R	REG. \$1520.00 SALE \$779.00
80% Low Boy Classic Furnace GIB04LD168A16R	REG. \$1764.00 SALE \$899.00
80% Downflow/Horizontal GIB04MD091A12F	REG. \$1493.00 SALE \$949.00
80% Downflow/Horizontal GIB04MD140A16F	REG. \$1954.00 SALE \$999.00

GIBSON 13 SEER UNITS-Special Pricing (While supplies last)

1.5T A/C R410A-GIBJS4BD018KA.....	\$515.00
2.0T A/C R410A-GIBJS4BD024KB	\$540.00
2.5T A/C R410A-GIBJS4BD030KB	\$588.00
3.0T A/C R410A-GIBJS4BD036KB	\$719.00
1.5T HP R410A-GIBJT4BD018K.....	\$658.00
2.0T HP R410A-GIBJT4BD024K.....	\$699.00



GIBSON FURNACE CLOSEOUT! WHILE SUPPLIES LAST!

	REGULAR PRICE	SALE PRICE
45K BTU 80% SHT UF/HZ GAS GIBGL1RA045C08A	\$427.00	\$329.00
72K BTU 80% SHT UF/HZ GAS GIBGL1RA072C12B	\$462.00	\$359.00
90K BTU 80% SHT UF/HZ GAS GIBGL1RA090C12B	\$490.00	\$379.00
108K BTU 80% SHT UF/HZ GAS GIBGL1RA108C16B	\$535.00	\$419.00
108K BTU 80% SHT UF/HZ GAS GIBGL1RA108C20C	\$545.00	\$419.00
126K BTU 80% SHT UF/HZ GAS GIBGL1RA126C20C	\$581.00	\$419.00
60K BTU 92% SHT UF/HZ GAS GIBGL1RC060D12A	\$797.00	\$519.00
80K BTU 92% SHT UF/HZ GAS GIBGL1RC080D12B	\$830.00	\$629.00
80K BTU 92% SHT UF/HZ GAS GIBGL1RC080D16B	\$832.00	\$569.00
100K BTU 92% SHT UF HZ GAS GIBGL1RC100D16B	\$899.00	\$599.00
120K BTU 92% SHT UF/HZ GAS GIBGL1RC120D16C	\$965.00	\$659.00
120K BTU 92% SHT UF/HZ GAS GIBGL1RC120D20C	\$965.00	\$659.00
45K BTU 80% UF/HZ GAS GIBKG6RA045C08A	\$515.00	\$389.00
96K BTU 80% UF/HZ GAS GIBKG6RA096C12B	\$610.00	\$439.00
96K BTU 80% UF/HZ GAS GIBKG6RA096C16B	\$612.00	\$469.00
96K BTU 80% UF/HZ GAS GIBKG6RA096C20C	\$639.00	\$439.00
120K BTU 80% UF/HZ GAS GIBKG6RA120C16B	\$639.00	\$439.00
120K BTU 80% UF/HZ GAS GIBKG6RA120C20C	\$667.00	\$479.00
144K BTU 80% UF/HZ GAS GIBKG6RA144C20C	\$732.00	\$499.00
60K BTU 92% UF/HZ GAS GIBKG6RC060C12A	\$732.00	\$499.00
80K BTU 92% TL UF/HZ GAS GIBKG6RC080C12B	\$769.00	\$589.00
80K BTU 92% TL UF/HZ GAS GIBKG6RC080C16B	\$765.00	\$579.00
100K BTU 92% TL UF/HZ GAS GIBKG6RC100C16B	\$832.00	\$599.00
120K BTU 92% TL UF/HZ GAS GIBKG6RC120C20C	\$908.00	\$689.00
72K BTU 80% DF GAS GIBKG6RK072C16B	\$515.00	\$389.00
40K BTU 90% DF GAS GIBKG6RL040C12A	\$715.00	\$539.00
100K BTU 90% DF GAS GIBKG6RL100C16B	\$833.00	\$629.00
72K BTU 80% SHT UF/HZ GAS GIBKG7SA072C24B	\$439.00	\$379.00
90K BTU 80% SHT UF/HZ GAS GIBKG7SA090C24B	\$480.00	\$389.00



The Energy Independence and Security Act of 2007 provided for the next round of government regulated standard efficiencies allowed for air conditioners sold in the United States. These new standards will go into effect on January 1, 2015. What is unique about these new efficiency standards is that they have allowed for different standards for various parts of the country rather than having just one national standard. Similar to the standard efficiency increases experienced in 2006 when the minimum went from 10 SEER to 13 SEER, this regulation will apply to all equipment, whether it is being installed in an existing structure as a system replacement or in a new structure.

Here is a summary of what you need to know about the new regulations:

- Northern States – Minimum 13 SEER air conditioning remains the standard, but heat pumps go to 14 SEER and 8.2 HSPF.
- Southern (Southeastern) States – Minimum efficiency goes to 14 SEER for both air conditioning and heat pumps and 8.2 HSPF for heat pumps. The 8.2 HSPF/14 SEER heat pump rating will become a national standard.
- Southwestern States – Minimum efficiency also goes to 14 SEER for air conditioning, but there is a new standard for EER that will call for 12.2 EER for systems less than 45,000 BTU/H and 11.7 EER for systems over 45,000 BTU/H. Heat pumps require national standard of 14 SEER and 8.2 HSPF



5.5" Multi-Horsepower Wizard Condensor Fan Motor 1/3 to 1/6 HP (208/230V)
MAR03458 SALE \$89.95



1/3HP 208-230V 825RPM WIZARD SOS MOTOR
MAR03459 SALE \$99.75



Mars 03583 1/4hp 115v 1075rpm R
MAR03583 SALE \$88.49



1/3 HP 208-230V 1075 RPM COND MOTOR
1 Speed 60HZ
MAR03729 SALE \$83.75



1/4HP 208-230V 1075RPM
MAR03728 SALE \$84.50



1/2 HP D.D. PSC 4SP 115V REV ROT
MAR03587 SALE \$103.25



1/3 HP D.D. PSC 115V FR 48 REV ROT
MAR03585 SALE \$89.95



5" Split Capacitor Fan Coil Motor
208-230 Volts 1625
FASD1025 SALE \$135.00



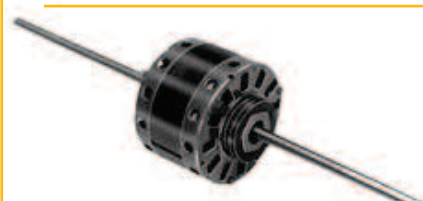
1/6-1/3 HP 1075 RPM Motor (208-230V)
WKG51-23053-21 RHEEM SALE \$87.75



1/3HP 208-230V 1075RPM REV ROT GE 5.5 IN. MULTI-SPEED
MAR03586 SALE \$93.25



1/6-1/2 HP 1075 RPM Motor (120V)
WKG51-23012-41RHEEM SALE \$96.95



5" Split Capacitor Fan Coil Motor
230 Volts 1550 RPM
FASD247 SALE \$152.95



1/6-1/2 HP 1075 RPM 4 Speed (208-230V)
RHEEM
WKG51-23022-41 SALE \$97.50



Robertshaw Transformers

- 240V to 24V w/ wire connections **RBS620-404.....\$16.94**
- 120V to 24V **RBS620-405.....\$12.91**
- 120/208/240V **RBS620-502.....\$22.86**



Goodman Transformers

- JAN0130M001385-208/230-24V.....**\$20.07**
- JAN0130M00140-120V to 240V.....**\$20.88**



1/6-1/3 HP 1075 RPM Motor (208-230V)
WKG51-23053-21 RHEEM SALE \$87.75



5.6-Inch Direct Drive Blower Motor
1/3 HP 115 Volts 1075 RPM 3 Speed 5.9 Amps OAO Enclosure Reversible Rotation Sleeve Bearing
FASD727 SALE \$62.95



CAPACITORS

- PAKTOC4-370 VAC OVAL
- PAKTOC5-5 MFD 370V OVAL
- PAKTOC6-5MFD 370V OVAL
- PAKTOC7.5-7.5 MFD 370V OVAL
- PAKTOC10-10 MFD 370V OVAL
- PAKTOC15-15 MFD 370V OVAL
- PAKTOC20-20 MFD 370V OVAL
- PAKTOC25-25 MFD 370V ROUND
- PAK35-35 MFD 370V OVAL
- PAKD255-25+5 MFD 370V OVAL

CALL FOR PRICING
1-800-TRIBLES
(874-2537)





Honeywell

Honeywell Thermostats

1H/1C	TH1110DV1009	\$26.30
2H/1C	TH3210D1004	\$43.49
2H/2C	TH5220D1003	\$57.14
1H/1C	TH5110D1006	\$40.55
Line Volt	T6169B4017	\$74.52
1H/1C	T834N1002	\$26.78
1H/1C	TH3110D1008	\$31.17

White Rodgers



White-Rodgers Thermostats

H/C Mech.	1F56N-444	\$26.35
1H/1C	1F78-144	\$32.34
HP	1F79-111	\$35.77
LV	1A10-651	\$69.87
Sub Base	S29-21	\$40.74



Blue Monster Compression Seal Tape

Blue Monster Compression Seal Tape stops problem leaks while under pressure without turning off the water source! Developed for professional plumbing contractors, Blue Monster Compression Seal Tape is ideal for crisis and long-term applications.

12' Roll-MIL76085.....\$32.10



Blue Monster PTFE Thread Seal Tape

Thicker, denser, general-purpose thread seal tape that comes in a monstrous 1,429" roll. That's 5 times more tape than conventional rolls of low-density thin tapes. Fewer wraps are necessary to affect a leak-proof seal and it applies easily. No waste and no re-taping make sealing joints a breeze.

MIL70885.....\$2.88



Blue Monster Citrus Scrubs

Amazing cleaning action with pleasant citrus cleanser, Vitamin E, Aloe, and Lanolin for conditioning. These scrubbing towels are pre-moistened; heavy-duty cleaning towels dispensed from a handy, flip-top container that goes anywhere you go.

MIL77095.....\$16.46—75 Count



Degreasing Solvent 17oz.

Powerful blasting spray removes grease, oily dirt and contaminants. This special formula is also suitable for cleaning equipment, tools plus parts and meets or exceeds current OTC VOC requirements.

NUC4083-75.....\$10.77



Foam Pipe Insulation Tape

NUC4219-12.....\$9.29



ClenAir Original Odor Neutralizer

Use one to two pounds of ClenAir Odor Neutralizer for every 400 square feet.

Original-NUC61000\$3.17
Cherry-NUC61010\$6.30
Orange-NUC61020\$6.30



ClenAir Liquid Formulas are a fast-acting deodorizing system.

NUC61030.....\$7.62



HVAC Odor-Block

Eliminates odors caused by mold, mildew, bacteria, pets, smoke, musty odors, water damage, fire damage, paints, chemicals, animal decay, stale air, garbage areas, sewer gases, skunks, and more! Use in A/C units, furnaces, rooftop units, and fan coil units, and air handlers. Residential HVAC Odor-Block treats up to 3 ton systems for 2 months. Commercial HVAC Odor-Block treats 10 to 15 ton systems for 4 months.

NUC61060.....\$17.85



MICHIGAN INDUSTRIAL TOOLS



13-Pc Long Arm Hex Key Wrench Set
Item #25242
\$7.78



6pc Precision Screwdriver Set
Item #82985.....\$1.99



16oz Rubber Mallet
Item # 83166.....\$3.99



8 in 1 Electricians Combo Tool
Item #3775.....\$7.72



25' Tape Measure
Item #71953....\$6.56



14pc Power Nut Driver Bit Set (Inch/Metric)
Item #82928....\$4.99



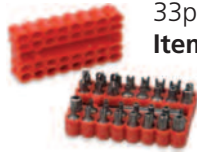
8 in 1 Universal Snap Ring Pliers Set
Item #83578....\$4.99



14pc Hex Key Set
Item #82500....\$2.99



5pc Tool Set
Item #81852....\$4.99



33pc Security Bit Set
Item #2930....\$11.46



Jumbo 64oz Funnel
Item #86095....\$2.99



2pc Screwdriver Set
Item #82750....\$3.99



8 in. Pipe Wrench
Item #82371....\$5.99



High Tension Angle Hacksaw
Item #6823....\$14.02



60pc Terminal Assortment
Item #83782....\$3.98



10 in 1 Screwdriver Set
Item #82791....\$3.99



5pc Hex Key Wrench Set -Metric
Item #82511....\$3.99



20pc T-Handle Bit and Socket Set (Inch)
Item #82822....\$3.99



18 in Jumbo Adjustable Wrench
Item #2340.....\$39.16



36 in Jumbo Pipe Wrench
Item #2395....\$58.08



For more information on tools please contact your salesperson or local branch

KLEIN TOOLS, INC.



9" (229 mm) High-Leverage Side-Cutting Pliers
KLED213-9NE....\$33.38



Adjustable Wrench Extra Capacity
KLED506-10....\$30.09



Curved Long-Nose Pliers
KLED302-6....\$28.88



8" (203 mm) Long-Nose Pliers - Long Reach, Rounded Nose
KLED314-8....\$14.84
While Supplies Last



10" (254 mm) Pump Pliers
KLED502-10....\$23.30



8" (203 mm) High-Leverage Diagonal-Cutting Pliers - Angled Head
KLED248-8....\$27.26



6" (152 mm) Adjustable Wrench Extra-Capacity
KLED506-6....\$22.38



6" (152 mm) Slip-Joint Pliers
KLED511-8....\$17.73



9" (229 mm) High-Leverage Side-Cutting Pliers
KLEHD213-9NE....\$37.07



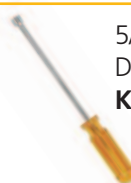
5/16" Stubby Nut Driver - 1-1/2"-Shank
KLESS10....\$7.58



8" (203 mm) Journeyman High-Leverage Universal Combination Pliers
KLEJ12098....\$48.35



Dual Range Non-Contact Voltage Tester
KLENCVT-2....\$19.92



5/16" Individual Nut Driver - 6"-Shank
KLES106....\$8.21



1/4" Stubby Nut Driver - 1-1/2"-Shank
KLESS8....\$7.49



1/4" Nut Driver-Extra Long Shaft KLES818M....\$23.84



5/16" Nut Driver KLES1018M....\$25.95



CALL FOR PRICING
1-800-TRIBLES (874-2537)



18.1 Cu. Ft. White Top Freezer Refrigerator Energy Star

2 Adjustable Humidity Crispers 2 Adjustable Spill Proof Glass Shelves, Optional Ice Maker, Upfront Temperature Controls, Gallon Storage
GTH18GBDWW



1.5 Cu. Ft. White Over-the-Range Microwave

- 950 Watts
 - Auto
 - Time Defrost
 - Two Speed 300 CFM Venting System
 - Add 30 Seconds Option
- JVM3150DFWW**



GE Laundry Center

24" **GTUP240EMWW**
 27" **GTUP270EMWW**

NEW NEW NEW!
NEW PRODUCT DISTRIBUTOR
for
GENERAL ELECTRIC



30" Free-Standing Electric Range

- Features
- 5.3 cu. ft. oven capacity
 - Enough room to cook an entire meal at once
 - Coil heating elements
 - Provide even heat and easy cleanup
 - Removable full-width storage drawer
 - Store cookware or kitchen accessories
- JB250DFWW**



30" Free-Standing Gas Range

- Features
- 4.8 cu. ft. oven capacity/Standard clean oven
 - Smooth surface and rounded corners make clean-up quick and easy. Standard grates.
 - Porcelain upswept cooktop.
 - ADA Compliant
- JGBS10DEFWW**



24" White Full Console Dishwasher Energy Star

- 12 Place Settings
 - 5 Wash Cycles featuring 4-Level
 - PowerScrub
 - Hard Food Disposer
 - Energy Star Rated
- GSD2100VWW**



16CF Top Freezer Refrigerator

- Improved Design
- Improved design provides quiet cooling for a more pleasant kitchen.
- Freezer Temperature Control
- To keep frozen items ice cold, freezer temperature controls allow you to adjust the temperature level of cold air in the freezer.
- Optional Ice Maker-ECKMF95
- The easy-to-install optional icemaker makes sure there's plenty of ice close at hand, so you won't have to fill your ice tray again.

WRT106TFDW



1.7 cu. ft. Over the Range Microwave with Hidden Vent

- The hidden vent streamlines the appearance of the microwave exterior, making it simpler to wipe clean.
- 1.7 cu. ft. Capacity
- Heat up leftovers with ease in this 1.7 cu. ft. capacity microwave hood combination. You'll have the room you need for frequently used items like dinner plates and microwave-safe bowls.
- 1,000 Watts Cooking Power

WMH31017AW



Dishwasher with Resource-efficient Wash System Tall Tub Design

- This model's Tall Tub design allows you to load tall and odd-shaped items in both racks. An additional 3" of interior space compared to standard tub models makes room for extra-large items in the lower rack and plates or sports bottles in the upper rack.
- Resource - Efficient Wash System
- This dishwasher's resource-efficient wash system cleans a full load of dishes using nearly 1/2 the water and energy¹. Whirlpool Brand's improved motor and wash system optimizes cleaning for better cleaning results versus the previous wash system and provides our quietest line of dishwashers ever.
- Quiet Partner™ I Sound Package
- Whirlpool brand dishwashers offer many levels of quiet operation with this system of sound reducing insulation.

WDF110PABW



5.1 cu. ft. 30" Freestanding Gas Range with Under-Oven Broiler

Enjoy the flexibility and efficiency you need to prepare holiday meals and everything in between with this 5.1 cu. ft. capacity freestanding gas range. full-width under-oven broiler, Multiple Power™ burners with up to 15,000 BTUs are perfect for high heat tasks, satin-finish cast-iron grates let you slide heavy pots and pans to the optimal cooking location. The upswept, porcelain SpillGuard™ cooktop contains spills for easy cleanup. Plus, you can monitor cooking progress without opening the door and disturbing the oven temperature with the large oven window.

WFG320M0BW



CALL FOR PRICING
1-800-TRIBLES (874-2537)



Whirlpool® Electric Laundry Center

WET4024EW-24 INCH
WET4027EW-27 INCH



Whirlpool® 30" 4.8 cu. ft. Capacity Electric Range with Custom Broil

- Oven Window-Allows you to check cooking progress without opening the oven door and disturbing the temperature.
- Custom Broil-Allows you to set your preferred broiling temperature in 5-degree increments between 300°F and 525°F. High heat is best for grilling meats, while low heat is ideal for delicate tasks such as melting cheese.
- Upswept porcelain spillguard™ cooktop-Helps contain messes and makes cleanup easier with the raised-edge design.

WFC150M0EW

FRIGIDAIRE



CALL FOR PRICING
1-800-TRIBLES (874-2537)



Frigidaire 16.3 Cu. Ft. Top Freezer Refrigerator

- STORE-MORE™ HUMIDITY-CONTROLLED CRISPER DRAWERS
- Keep your fruits and vegetables fresh in our humidity-controlled crisper drawers.
- STORE-MORE™ GALLON DOOR SHELF
- Door storage gives you room for larger items like a gallon of milk.
- REVERSIBLE DOOR
- Door can be installed to open left or right based on your needs.
- 28" W x 30-1/8" D x 64-3/8" H

FFTR1614QW



Frigidaire 30" Freestanding Electric Range with 4 Burners

Store-More Storage Drawer Our convenient drawer gives you extra storage space in your kitchen. Color-Coordinated Oven Door with Large Window Stylish look with a large window makes it easy to check on what's cooking without opening the door. Bright Lighting Our bright lighting makes it easy to see whats inside.

FFEF3005MW



1.6 Cu. Ft. Over-The-Range Microwave

- 29-7/8" W x 15-1/32" D x 16-13/32" H
- TWO SPEED VENTILATION
- Over-the-range microwave doubles as a hood offering ventilation with two fan speeds.
- EXTRA-LARGE 13-1/2" DIAMETER GLASS TURNTABLE
- Big bowls and large casserole dishes are no problem for our extra-large glass turntable. It rotates for even cooking.
- READY-SELECT® CONTROLS
- Easily select options with the touch of a button.

FFMV162LW



Frigidaire 30" Freestanding White Gas Range 4 Burners

Range gives you more cooking flexibility with a 4.2 cu. ft. capacity oven and Broil and Serve Drawer. The cooktop features four 9,000 BTU Gas Burners. Ready-Select control knobs allow you to easily select options and cooking temperatures.

FFGF3005MW



Frigidaire 24" Built-In Dishwasher

- TALL-TUB DESIGN
- Our large capacity, tall-tub dishwasher fits up to 12 place settings so you can wash more at once.
- DISHWASHER SPECIFICATIONS
- Place Settings: 12
- Interior: Plastic
- Filter: Plastic
- Food Disposer: Yes
- Rinse Aid Dispenser: Adjustable with Indicator
- Wash Levels: 2
- Wash System: Tower Wash
- Filter Cleaning Type: Self Cleaning
- 24" W x 25" D x 34-7/8" H

FBD2400KW



Frigidaire Electric Laundry Center

27"W x 31-1/2"D x 76 H
FFLE2022MW



20" Electric & Gas Ranges

BSWWEM110-Electric
BSWWNM110-P-Gas



24" Electric & Gas Ranges

BSWWNMWEM610-Electric
BSWWNM610-Gas



30" Electric & Gas Ranges

BSWWEM210-Electric
BSWWNM210-7-Gas



36" Gas Range

BSWWNM430-7KW



CALL FOR PRICING
1-800-TRIBLES (874-2537)

All listed models are white, colors available include, white, bisque, black and stainless on black



**Bradford White
GAS**

- 30 Gallon Short Gas
RG240S6N
- 40 Gallon TTW Gas
RG1PV40S6N
- 40 Gallon Short Gas
RG240S6N
- 40 Gallon Tall Gas
RG240T6N
- 40 Gallon Direct Vent Gas
RG2DV40S6N
- 50 Gallon TTW Gas Power Vent
RG2PV50H6N
- 50 Gallon TTW Gas
RG1PV50S6N
- 50 Gallon Direct Vent Gas
RG2DV50H6N



ELECTRIC

- 30 Gallon Low Electric
RE230L6
- 40 Gallon Tall Electric
RE340T6
- 40 Gallon Regular Electric
RE340S6
- 40 Gallon Low Electric
RE240L6
- 50 Gallon Tall Electric
RE350T6
- 50 Gallon Regular Electric
RE350S6
- 50 Gallon Low Electric
RE250L6



**NEW NEW NEW NEW
NEW NEW NEW NEW
NEW NEW NEW NEW**

HEATGUARD TANK BOOSTER PRO

Tank Booster by Cash Acme is a thermostatic mixing valve that effectively doubles your household's usable hot water! It allows you to increase the temperature of your water heater while still maintaining a safe outlet temperature of 120°F. Introductory price **24832.....\$99.00**



**JOIN
BRADFORD WHITE
WATER HEATERS**

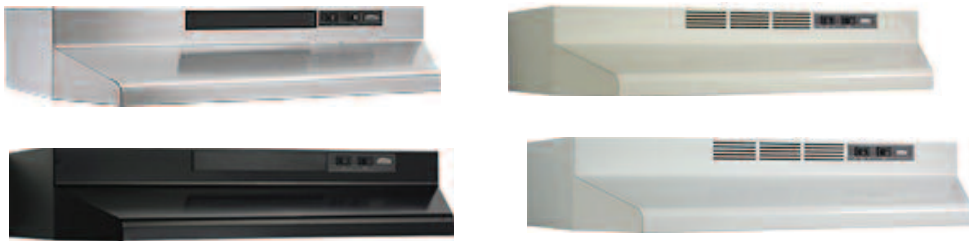
**IN HONORING
OUR HEROES**

**BUY AMERICAN MADE PRODUCTS
AND SUPPORT THE
WOUNDED WARRIOR PROJECT®**

Purchase Bradford White® Commercial Gas and Electric Products from September 1 to December 31, 2015 and **YOUR COMPANY'S NAME** will be submitted (per heater) with a **\$25.00** donation to the **WOUNDED WARRIOR PROJECT®**

Tribles Inc. SINCE 1936

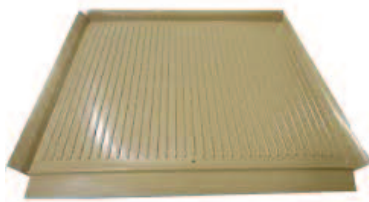
BROAN®



Broan Range Hoods come in a variety of colors and sizes.



Consult a Tribe's Representative or Branch for more information



CABINET SAVERS

Come in a variety of sizes and 2 colors; White or Almond
\$14.97 each



Camco 20752 32"OD x 30" Washing Machine Drain Pan w/PVC Fitting (White)

- High impact polypropylene plastic
 - Will not rust, corrode or crack
 - Includes PVC drain fitting
 - Bottom or side outlet, not pre cut.
- \$16.59**



5-Foot Red and Blue Washer Hose
 2 pack of 5 foot hoses
8212545RP.....\$11.50 Set



Receptacles

- 30A Surface Mount Dryer **MAR84699.....\$17.92**
- 30A Surface Mount Dryer **MAR84700.....\$6.93**
- 30A Flush Mount Dryer **MAR84701.....\$4.43**
- 50A Surface Mount Range **MAR84702.....\$6.93**
- 50A Surface Mount Range **MAR84705.....\$17.92**



Range Cords

- 4' 50amp 3 wire-Wx09x10010.....**\$8.56**
- 6' 50amp 3 wire-Wx09x10012.....**\$12.55**
- 4' 40amp 4 wire-Wx09x10035.....**\$7.83**
- 4' 40amp 3 wire-Wx09x10006.....**\$6.13**
- 6' 40amp 3 wire-Wx09x10008.....**\$8.55**

Dryer Cords

- 4' 30amp 3 wire-Wx09x10002**\$5.14**
- 6' 30amp 3 wire-Wx09x10004**\$6.70**
- 10' 30amp 3 wire-EZF61252**\$10.92**
- 4' 30amp 4 wire-Wx09x10018**\$6.65**
- 6' 30amp 4 wire-Wx09x10020**\$8.66**



Broan-Big Heat Heater

Rugged steel construction, durable finish with integrated carrying handle and rounded bumpers to protect surfaces

Instant, automatic safety shut-off if tipped over on its front or back

Overheat protection shuts off the heater and activates the "caution" light if excess heat is detected

Efficient, ceramic heating elements with full 1500 watts for fast warm-up, 1200 watt setting maintains warmth using less electricity

High, low or fan only settings with quiet operation and a 6 foot cord with safety flanged plug

BRN6201.....\$52.18



Whirlpool 4-Way Dryer Vent Kit

4-way vent kit is to be used when venting is in positions other than the back of the dryer. Use on dryers with lint screen in the front.

W10470674.....\$25.00



ProFlex™ Dryer Vent Duct

Flexible Duct
 25ft & 50ft Boxes
DUNTD425-25FT.....\$11.00
DUNTD450-50FT.....\$22.55



Dundas Jafine Inc. 4in. White or Brown Louvered Style Vent Hood

Available in single or lots

DUNLH4WXZ (White) LH4BXZ (Brown)
\$3.34 each 3 Lot \$3.23 6 Lot \$3.13



For more information on Huntington Brass Faucets please contact your salesperson or local branch.



Pull-Out Kitchen Faucet
Stainless steel ball washer-less valve
Metal lever handle
With deck plate
Can be mounted with or without deck plate
Satin Nickel finish
AB-HB8770NK.....\$99.74



8" Center Kitchen w/Spray
2 Acrylic Handles
Chrome
HB1220C.....\$32.61



Kitchen Faucet
360° swing angle spout
Stainless steel ball washer-less valve
With deck plate
Satin Nickel finish
HB5611NK.....\$30.55



4" Center Lavatory
Acrylic Handle w/ Pop Up
Chrome
HB5510C.....\$29.72



4" Center Lavatory
Single Lever
Chrome
HB5510-B.....\$38.93



8" Center Faucet
Single Lever Handle
Chrome
HB5720C.....\$38.93



Shower/Bath Valve
AFCHB04120-00.....\$31.65



8" Center Kitchen Faucet
2 Acrylic Handles
Chrome
HB1210C.....\$27.87



8" Center Kitchen Faucet
2 Acrylic Handles
Chrome
HB1210C.....\$27.87



Replacement Sprayer for:
• 51171-01
• Chrome finish
KS8100-01.....\$15.50



Reliaflo Tub and Shower
Trim Lever handle
Single setting shower head
PVD Satin Nickel finish
12630-72.....\$33.51

**For use with 04120-00 valve*

TOILETS AND ACCESSORIES



1.6 Gallon Tank with Fluidmaster

WesULF-8 (White).....\$49.99

Delivery Only-NO UPS/FEDEX



Fluidmaster
The Most Popular Name in Toilet Care

WES400A.....\$7.98



Wentworth Elongated 1 Piece w/Fluidmaster

WES1152-FM\$156.00

WES137B-Bowl-ADA.....\$87.32

WES160-1.6GPF Tank-White\$42.90



Round Front

WesB822-W (White).....\$29.66

Elongated

WesB832 (White).....\$44.56

Delivery Only-NO UPS/FEDEX



Round Wood Toilet Seat – White EZF65905.....\$9.04

Elongated Wood Toilet Seat – White EZF65907.....\$11.12

LOT PRICING AVAILABLE

Don't forget the cleaning supplies!



Spray Nine Cleaner

32oz Spray-KNI26832.....\$4.39

1 Gallon-KNI26801.....\$10.08

5 Gallon-KNI26805.....\$53.75



Grez-Off Cleaner

32oz.-KNI22732.....\$4.45



Glisten

Washer Magic

SMTWM0612N.....\$5.70



Affresh Cleaners

Washer-W10135699.....\$6.00

Dishwasher/Disposal-FSPW10282479.....\$5.00



PLEASE CALL FOR OUR WIDE VARIETY OF CLEANERS FROM GENERAL HOUSEHOLD AND STAINLESS TO HEAVY DUTY
1-800-TRIBLES (874-2537)

Don't forget the caulk...Polyseam Seal Caulk

- Clear 5.5 oz.-POL1508193
- Clear 10 oz.-POL1508194
- Clear Tub/Tile 5.5 oz.-POL1509360
- Clear Tub/Tile 10 oz.-POL1509361
- White AP 10 oz.-POL1514750
- White Tub/Tile 10 oz.-POL1515187
- White AP 5.5 oz.-POL1515770
- White Tub/Tile 5.5 oz.-POL1515861

**BUY 6 10oz AND
GET A CAULK
GUN FREE**

DIV7-200



**Put the "Magic"
in cleaning!!!**

GOO GONE Stain Remover-8oz.
MACGG12\$3.98

GOO GONE Stain Remover-4oz.
MACGG44\$3.02

GOO GONE Mini Bottle-1oz.
MACGG89\$1.88



Stainless Steel Aerosol
MAC1860.....\$4.94



Citrus All Purpose Cleaner
MACGG66.....\$4.73



Grout-Clean
and Restore
MAC1946....\$4.14



Cabinet and Wood
Magic Trigger
MAC1876....\$4.94



Cabinet and Wood
Magic Aerosol
MAC1861....\$4.94



SENSING THE DIFFERENCE

Disposers & More

- 1/3 HP Garbage Disposal-FSPGC1000
- 1/2 HP Garbage Disposal-FSPGC2000

**Buy 6 GC2000's
get a Disposal
Installation Tool
FREE!!!** MIL73030



- 1/3 HP Disposal-ISEBADGER I
- 1/2 HP Disposal-ISEBADGER V
- 3/4 HP Disposal-ISEPRO750
- 7/8 HP Disposal w/Auto Reverse-ISEPRO880
- 1 HP Disposal-Evolution-ISEEXCEL
- Evolution Septic Disposer-ISESEPTICASSIST
- Bio-Charge Enzyme Treatment for use in the
Septic Assist-ISEBIO-CHA or ISE71760

**Plumber's Third Hand Garbage
Disposer Installation Tool**

Installs garbage disposers in minutes, one person operation.
Holds disposer and parts leaving two hands for installation

MIL73030.....\$25.32





CORPORATE OFFICE & DISTRIBUTION CENTER

Upper Marlboro
 16200 QUEENS COURT
 UPPER MARLBORO, MD 20774
 301-430-6100 Sales
 301-430-6141 Fax

MARYLAND

White Marsh

9600 Pulaski Park Drive
 Pulaski Business Park #119
 White Marsh, MD 21220
 410-780-3666
 410-780-0130 Fax

Beltsville

5700H Sunnyside Ave
 Beltsville, MD 20705
 301-313-0990
 301-313-0288 Fax

Ocean City

12809 Coastal Highway
 Montego Bay Shop
 Ocean City, MD 21842
 410-250-7040
 1-800-207-7040
 410-250-7163 Fax

Rockville

850 F East Gude Drive
 Rockville, MD 20850
 301-251-9611
 301-309-6908 Fax

Timonium

2233 Greenspring Drive
 Timonium, MD 21093
 410-252-1454
 410-252-2149 Fax

Waldorf

2218 Crain Highway
 Waldorf, MD 20601
 301-843-1720
 301-645-0532 Fax

Baltimore

2601 Rolling Road
 Suite 108 & 109
 Baltimore, MD 21244
 410-265-6655
 410-265-0184 Fax

VIRGINIA

Merrifield/Falls Church

2809 Merrilee Drive
 Merrifield, VA 22031
 Suite G
 703-573-1000
 703-573-3849 Fax

Norfolk/Virginia Beach

2600 Eltham Avenue, #108
 Norfolk, VA 23513
 757-857-1166
 757-857-1189 Fax

Richmond

2830 Ackley Avenue #105
 Richmond, VA 23228
 804-264-8800
 800-672-8524
 804-264-3300 Fax

Roanoke

3320 Shenandoah Avenue
 Roanoke, VA 24017
 540-342-0606
 800-563-1285
 888-873-1499 Fax

Springfield

6200 Gravel Avenue
 Springfield, VA 22310
 703-921-2150
 703-921-2170 Fax

Sterling

506 Shaw Road #301
 Sterling, VA 20166
 703-435-7515
 703-435-6910 Fax

PENNSYLVANIA

Downingtown

190 Robbins Road
 Downingtown, PA 19335
 610-873-3000
 877-Tribles
 610-873-9512 Fax

NEW JERSEY

Fairfield

2 Madison Road
 Fairfield, NJ 07004
 973-439-9130
 973-439-9141 Fax

TENNESSEE

Nashville

2603 Cruzen Street
 Nashville, TN 37211
 615-761-5660
 615-251-3331 Fax

GEORGIA

Smyrna

4600 Highlands Parkway, STE F
 Smyrna, GA 30082
 678-385-6710
 678-305-0007 Fax

SOUTH CAROLINA



G&E Parts Center

2363 S. Pine Street
 Spartanburg, SC 29302
 864-585-6277
 864-585-0408 Fax

Columbia

1214 Bluff Avenue
 Columbia, SC 29202
 803-771-4346
 803-256-6593 Fax

Greenville

2025 Laurens Road
 Greenville, SC 29607
 864-242-0999
 864-270-9504 Fax

North Charleston

1033 E. Montague Avenue
 North Charleston, SC 29405
 843-747-7355
 843-744-7201 Fax



KENTUCKY

Lexington

1929 Liberty Road
 Lexington, KY 40508
 859-254-4051
 859-255-5715 Fax

TENNESSEE

Bristol

2925 West State Street
 Bristol, TN 37621
 423-968-3138
 423-968-4458 Fax

Chattanooga

2227 East 23rd Street
 Chattanooga, TN 37404
 423-624-7608
 423-622-6802 Fax

Knoxville

857 North Central Street
 Knoxville, TN 37917
 865-525-9363
 865-525-7360 Fax

TWIN CITY SUPPLY



RHODE ISLAND

Providence

233 Harris Avenue
 Providence, RI 02903
 401-331-5930
 800-556-7544
 401-421-2133 Fax

MAINE

Portland

105 St. James Street
 Portland, ME 04102
 207-774-4444
 800-492-0884
 207-874-6452 Fax